



Image courtesy: www.nextgenafricanfarmers.com

unparalleled research experience

- over 42 years of accumulated knowledge
- research covering thousands of agri-enterprises
- agri-value chains: promotion and assessments
- agri-finance analytics – warehousing, organic food processing & marketing enterprises

MEL, inclusive business research, equity valuations institutional/financial ratings, guarantee facilities

acclaimed innovator

- pioneered financial inclusion ratings, value chain and FPO assessments
- market leader with a scored assessment framework for agri-enterprises and FPOs

M-CRIL's service offering includes **research and evaluation, data analytics and training and capacity building** in the fields of agri-value chains/enterprises and microfinance

The selection of value chains covered by M-CRIL includes

- Horticulture in Indonesia
- Paddy/Rice in Myanmar
- Coffee in Vietnam
- Non-timber forest products, Nepal
- Sericulture & silk production, Bangladesh
- Vegetable value chains in India
- Honey value chain promotion
- Coarse grains – barley, millet
- Fisheries value chain
- Brassware, wooden handicrafts
- Poultry, dairy value chains

Agricultural Value Chains Farmer Producer Organisations

Our partners



Rabobank Foundation



FORD FOUNDATION



ASIAN DEVELOPMENT BANK



Empowered lives.
Resilient nations.



Investment works



WORLD BANK GROUP



Foreign, Commonwealth & Development Office



SFAC
लघु कृषक
कृषि व्यापार संघ



Working with value chains and farmer producer organisations/farmer support in **Cambodia, India, Indonesia, Myanmar, Nepal, Vietnam**

Value chains, inclusive business, agri-finance services



Our value chain enterprise analysis covers

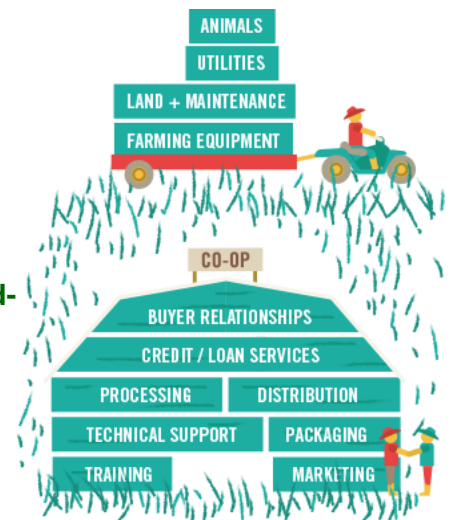
- Mapping of the overall value chain
- Assessment of production, productivity, storage and sales
- Analysis of the economics of production at the household level,
- Assessment of forward & backward linkages, demand & supply patterns
- Analysis of challenges & opportunities for development.

EDA has been working for more than two decades in **direct implementation** to improve the efficiency of VCs, with the aim of ensuring improved returns to small producers.

M-CRIL has promoted **Farmer Producer Organisations (FPOs), farmer groups and cooperatives** in India & elsewhere to assist small producers through improved economies of scale on both inputs & outputs and enhancing their bargaining power. We have promoted 50+ FPOs and many dozens of farmer cooperatives

For FPOs & farmer groups looking to strengthen business performance, **our FPO assessment product covers: business model, governance, management, operating systems, demand-supply & potential of value chains they operate in, financial reporting & performance as well as gap analysis**

This provides a basis for the FPO & supporting agency to plan for institutional and business improvements; & commercial banks and investors to make lending and investment decisions in an FPO.



Head Office

542 Megapolis
Sohna Road, Sector 48
Gurgaon 122 018 India

ashokkumar@m-cril.com
arpita@m-cril.com



Myanmar

M-CRIL Myanmar Ltd
(local office currently suspended)

Tirupathaiah Namani
Country Manager, Myanmar
tirunamani@m-cril.com



Cambodia

Branch of Micro-Credit Ratings
International Limited

Shayandeep Chakraborty
AVP & Country Manager, Cambodia
shayandeep@m-cril.com